

MARINE STAINLESS 316 RBW SERIES

Tested under ASTM B119-19

** Features High Output LEDs

Tested under ASTM B119-19 method

R-B-W 3000K & 4000K Single ON/OFF Switch Control

Stainless 316 High Polished Mirror finish

Stainless Powder Coat finish, IP-65 rating

DC 10-30V input, ML-4 (5W) 300 Lumens,

ML-5 (5W) 300 Lumens, ML-6 (9W) 580 Lumens,

ML-7 (12W) 790 Lumens

Available in Modern Trim or Traditional Trim

Modern Trim

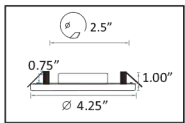
Traditional Trim



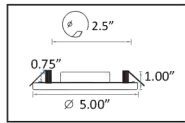
White Trim



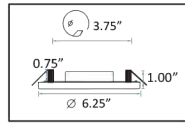
Polished Trim



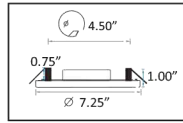
ML 4



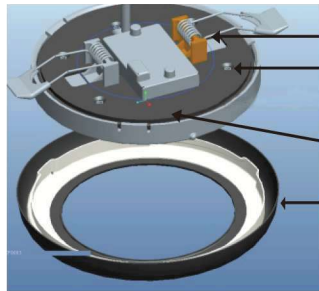
ML 5



ML 6



ML 7



R-B-W 2 Wires DC 12V, DC 10-30V, DC 24V

Stainless spring loaded mounting clips

Stainless mounting screws

Permanent Gasket

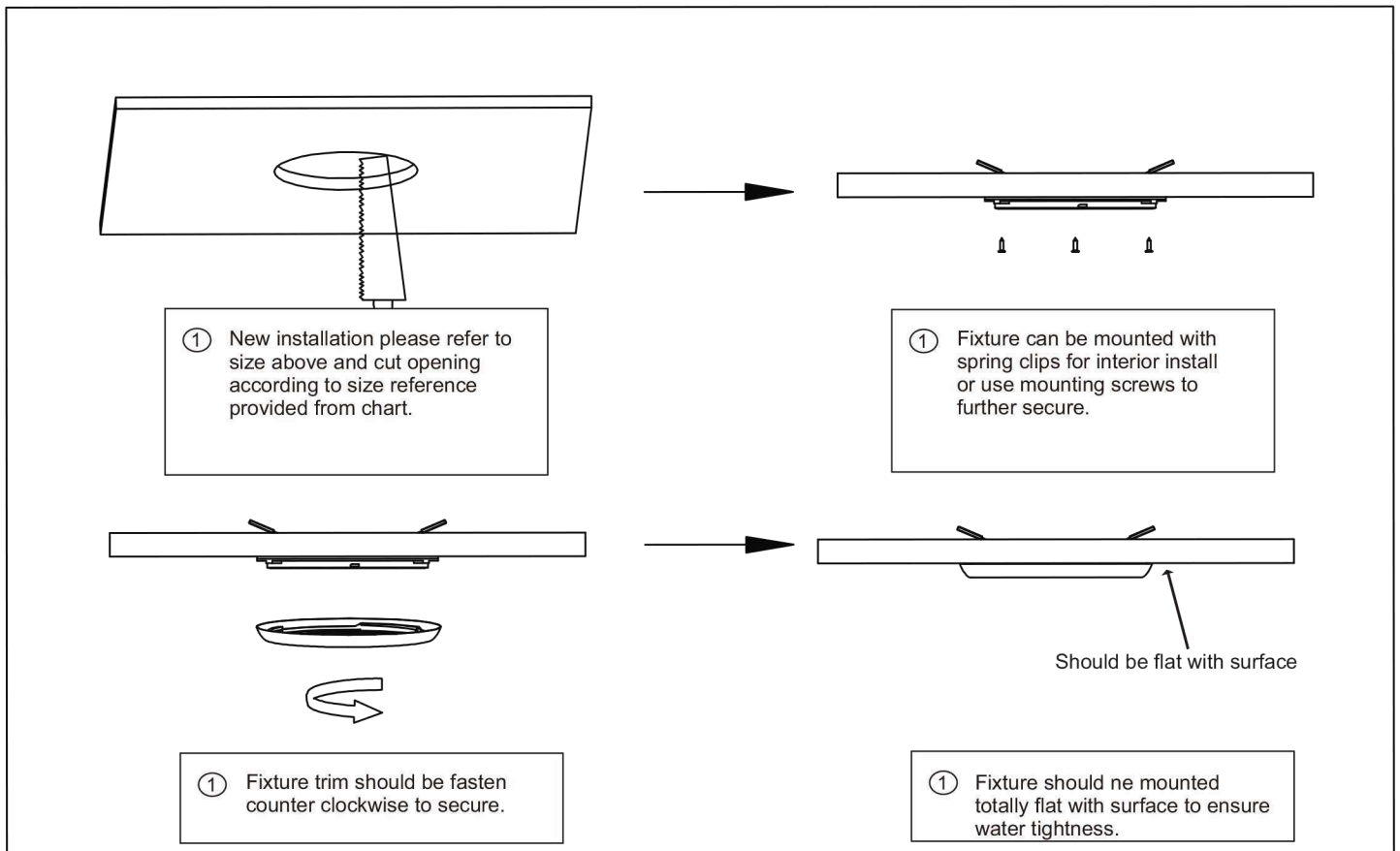
316 Stainless mounting trim

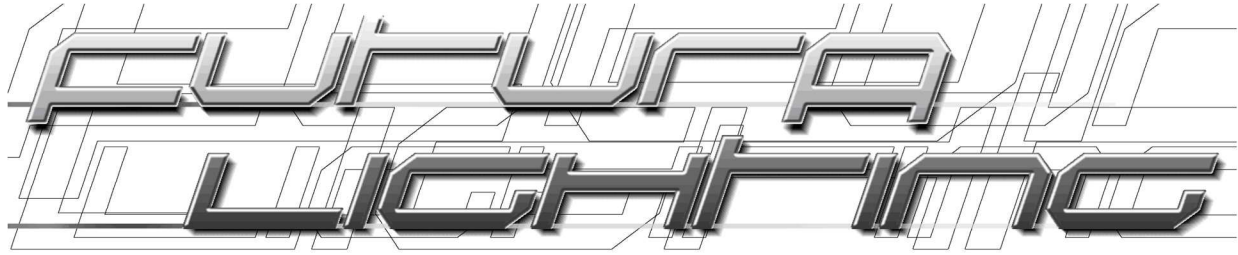
Electrical rating:

10-30V DC which will operate from 10V-16V & 22-28V

12V DC will operate from 10-16 and dimmable

24V DC will operate from 22-28V and dimmable





RBW SWITCHING

- Step 1: Turn lites ON. WHITE is the default color.
- Step 2: The lite will ramp up from 10%-100% (Takes about 10 Secs)
- Step 3: Once the lite is full brightness, Turn OFF - Turn ON (about 2 Secs)
And the lite will change to BLUE.
- Step 4: The lite will ramp up from 10%-100% (Takes about 10 Secs)
- Step 5: Once the lite is full brightness, Turn OFF - Turn ON (about 2 Secs)
And the lite will change to RED.
- Step 6: The lite will ramp up from 10%-100% (Takes about 10 Secs)
- Step 7: Once the lite is full brightness, Turn OFF - Turn ON (about 2 Secs)
And the lite will change to WHITE and begin the sequence again.

DIMMING

To adjust the brightness, as the lite is ramping up from 10% to 100%. When you get to the level of desired brightness, Turn OFF/Turn ON (about 1 sec) And the lite will stay at that level. The same step works for ALL three colors.

RESET

To reset the sequence, Turn OFF for 5 secs and Turn ON to start with WHITE.

Note: Do not dim with wall dimmer / only with on/off switch (as above)